

---

# Geotechnical risks map "Case of the ZHUN EAST, Saïda city - ALGERIA"

**Youcef Houmadi\*** — **Sidi Mohamed Aissa Mamoune\*** — **Khalil Belakhdar\*\***

*\* Laboratoire Eau et Ouvrages dans leur Environnement (EOLE), Faculté des Sciences de l'Ingénieur, Université of Tlemcen, Algérie, houmadiyoucef@yahoo.fr, mamoune@mail.univ-tlemcen.dz*

*\*\* University of Saïda, Department of Civi Engineering, FST, Saïda, Algérie, be.khalil@gmail.com*

---

*ABSTRACT. The urban expansion and the increase in population led the urbanization to use the spaces "called at risks". The integration and the treatment of ground's movements constitute an important characteristic of the equilibrium established by nature.*

*In the Saïda town (Algeria), many projects built on grounds with problems showed signs of degradations such as cracks in structures. These degradations led to the total destruction of the building. The principal causes of these disasters are: the nature of the expansive nature of soils and landslides, disaster phenomenon not considered in the first study of these constructions. The damage also touched road embankments, highways and foundations.*

*In order to solve these problems, it was necessary to propose a geotechnical and risks map for the ZHUN EAST (ESSALAM city, Saïda), city which includes several yard of the soil with problems, using the geographical information systems (GIS/MapInfo). These tools enable us to express the perception of space and data processing, and consequently the cartography is carried out in an optimal way. These geotechnical and risks maps have a great part of importance in all levels of a study as information, working paper, alert, and especially is a tool for the decision-making aid, by expressing tendencies and orientations.*

*They enabled us to give a field representing the active and potential movements with a hierarchy of risks to guide the developer and the engineer.*

*KEYWORDS: Map, Geotechnical Engineering, Risks, GIS, Urbanization, Swelling*

---

## 1. Introduction

In the town of Saïda wilaya which is located in the South-west part of Algeria, many construction works have been built on argillaceous grounds showed signs of degradations in form of cracks on the superstructures and this is because of the dryness of these three last decades (Figure.1). These degradations led to the total collapse of certain construction works. The main cause of these disasters is either the expansive character of clays, frightening phenomenon not taken into account when designing these construction works, or other geotechnical risks (landslide, settlement...). The damage also touched road embankments, roadways and foundations [1] (Bekkouche and Al, 2002).

The awakening of these problems is new and the technical solutions are not always effective, even less easy to implement. If these problems are not taken into account for new constructions, one will have to expect worse.

This work is devoted to carry out geotechnical maps, and at the risks on the level of the east ZHUN of Saïda

It is a question in particular of analyzing the zones at the risks of the area by using the Geographical Information system "G.I.S." which remains the tool for appreciation of information on cartographic support. Initially, a geological outline of the site is presented. The stepping of this aspect with the available geotechnical data enabled us to carry out a geotechnical map of zone of study. This map emphasizes great argillaceous horizons which are likely to be expansive and of other zones with important slopes, this on a chart at the risks.

In order to appreciate the aspect of the behavior of these clays, a qualitative and quantitative study was undertaken. This study consisted initially of an identification of the parameters of swelling of these formations while being helped of classifications available in the literature [4] (Djedid and Al, 2001) and on the basis of statistical model of these two parameters of swelling [1] (Bekkouche et al.; 2002).



**Figure 1.** *Pathological case in the city of Saïda*

## 2. Presentation of the zone of study

The ground to be studied is of a surface about 200 hectares.



**Figure 2.** Satellite picture of the town of Saida and the zone of study (google Earth V 4.3)

A road longitudinally crosses the ground and divides it into two quite distinct parts:

- A part in the East, delimited by the Torba wadi.
- The other part in the West, delimited by a thalweg and a dense forest.

The ZHUN is limited by the following coordinates LAMBERT:

$X1=269.30$  à  $X2=267.75\text{Km}$ .

$Y1=173.60$  à  $Y2=174.55\text{Km}$ .

According to the topographic map the Saida zone sheet N°304 Scale 1/50.000.

Concerning the geomorphology of the site, it is presented in the form of basins with some monticules of altitudes which are at least important.

It can be subdivided in two micro basins slopes. One located at the East and drained by the Torba River, the other in the West drained by a river which has as a discharge system the river of Saïda.

With regard to the topography of the site, it is located between 822 and 908 of altitude, with broken slopes..

### **3. Geological aspect**

#### **3.1. *Natural and geological framework***

Algeria is generally divided into three structural fields which are from north to south..

- Tellien field..
- Atlassic field.
- Field of the Saharan platform.

The area of Saida belongs to the Tlemcénien field, which represents a sub-assembly of the field atlassic. The Tlemcénien field is before country of the tel. Of fairly raised altitude, it starts with the solid mass of Ghar Rouben. In the east of this latter, one distinguishes the mounts from Tlemcen, Daia, Saida, and Tiaret with Boughedou, the mounts of Frenda and djebel Nador. This system is lost under the plate of Sersou and is found in the east in the solid mass of Hodna.

The natural space of the town of Saida, belongs to the downstream of the large catchment area of the valley of Saida Wadi. The commune includes three homogeneous physical units:

##### **- Unit 1: the plain of the valley of Saida Wadi**

It corresponds to the terraces with deep ground, skirting the North of the Saida Wadi. It is a stable unit. It extends on a surface from 472ha and accounts for 6.23% of the territory of the commune.

##### **- Unit II: karstic plates.**

It presents the plates at low altitude, in the Western center and the South. Components slopes of the mountainous areas. It extends on a surface from 1171ha and accounts for 15,45% of the territory of the commune.

##### **- Unit III: rock hills and the mountainous area.**

It is the dominant unit which is practically located in the West, the South and the South East and which girdles the city. It is made up of the Karstique landscape and in the mountainous area. It corresponds to a surface of 5.937ha and accounts for 78.32% of the territory of the commune

Part of this unit is covered by the drill and the maquis in the West at the top of the Abdelkrim Mountain and in the South at the top of djebel Irlem, on a total surface of 1651ha is 21.78% of the territory of the commune.

### **3.2. Aquiferous characteristic**

The wilaya of Saïda is characterized by the diversity of the aquiferous potentialities. In this respect, it is necessary to quote three principal sheets: sheet of Chott Chergui, sheet of mineral water of Saïda and sheet of warm water of Hammam Rabi.

The principal geological stages represented on the level of the area are:

- The paleozoic: the rocks are metamorphic not very faded and form an impermeable unit.

- the Jurassic inferior and means: is formed by a lower extremity consisted by dolomitic rocks known as dolomites lower than permeability of fissures, an intermediate member represented by the marls of Essafeh forming an impermeable level and a dolomite upper member made up of dolomites known as higher dolomites than permeability of fissures.

- The callovo-oxfordien: formed mainly of clays with intercalations of benches of likings, it is a not very permeable unit.

- The Lusitanian: represented by the more or less permeable likings of Franchetti.

- The plio-quadernary: comprises levels of permeable conglomerates.

- the principal aquiferous horizons are:

- The likings of the Lusitanian.

- The lower and higher dolomites of the Jurassic inferior and means.

The impermeable levels of important thickness are:

- The clays of Saida (callovo- oxfordien).

- The marls of Essafeh (toarcian).

The sandy trainings of the Lusitanian positioned in altitude constitute isolated reliefs and do not give perennial sources. They do not seem to constitute a potentially mobilizable tank.

The conglomeratic grounds of the quadernary plio- extend on banks from the Saida wadi and offer only low flows when they are exploited in the form of well low depth.

The formations sandy argilo- of the callovo - oxfordien constitutes a practically impermeable level. The dolomitic formations of the very fissured inferior Jurassic and middle Jurassic represent the most important reserve of the area. The lithological distribution makes it possible to divide it into two aquiferous horizons, that of higher dolomites and that of lower dolomites.

The two levels are separated by the impermeable trainings (marls) of the toarcian, affected locally by secondary faults, the layers marly- limestones leave the possibility of communication between the aquifers.

### 3.3. Boundary conditions

The substratum is consisted of not very faded schists and quarzites of the primary which level in Tiffrit. One can admit that they constitute a tight vertical limit. Beside a practically impermeable wall, the roof is formed by clays of Saida (callovo-oxfordien) which constitutes a tight vertical limit. Laterally, the aquifer knows a limit tight in the West and the North-West. The structure shows in these directions that dolomites are partially brought in contact with clays of Saida to the level of the western edge of the trough fault of the valley of the Saida wadi.

In north the aquifer is not very thick; one observes a side variation of facies characterized by a dolomite passage lower than the marls of Modsbad. In the North-East the aquifer stops in bevel on the outcrops of the formations of the mole of Tiffrit (primary).

This situation with generated a hydraulic hinge zone between Oum Djrane and Tiffrit characterizing a central articulation of the various basins and their tectonic zone.

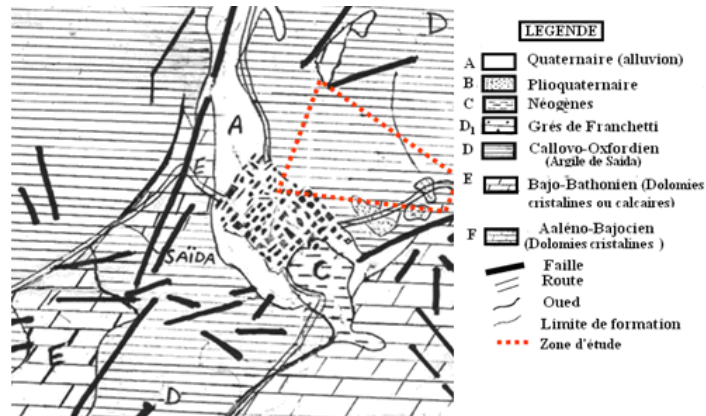


Figure 3. Geological map of the area of SAIDA Scale: 1/50 000

#### 4. Elaboration of the geotechnical map

##### 4.1. Collect geotechnical information

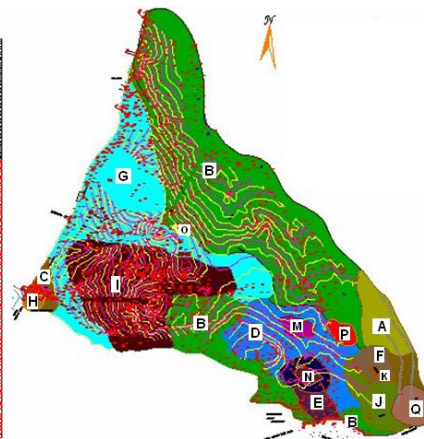
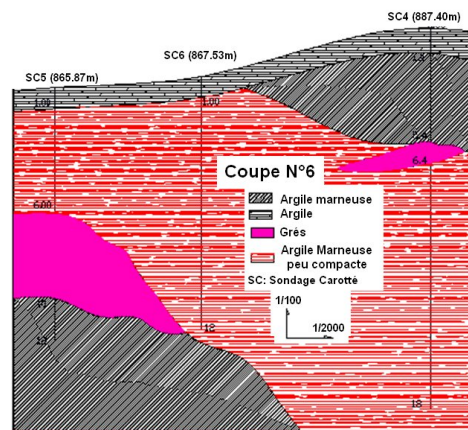
Information which was used for the realization of this piecework comes from various sources:

- Analytical folder containing the whole of information which was used for the elaboration of the maps, are laid out at laboratory NLHC (National laboratory of the Habitat and Construction, Unity of Sidi Bel Abbès) [14].

There exists 51 points of information (19 test surveys and 32 tests of dynamic penetration) in which we find physicochemical and mechanical tests [14].

##### 4.2. Collect geotechnical information

The geotechnical map of the study zone (Figure.4) was carried out starting from the superposition of the maps of the soils layer. These maps of the layers were the result of the projection of the geotechnics cuts in space (three dimensions) (Figure.4).



**Figure 4.** Exemple d'une coupe géotechnique N°6. **Figure 5.** Carte géotechnique de la ZHUN Est de Saïda

Legend of the geotechnical map of the ZHUN East of Saïda

A: compact marly Clay.

B: Clay, compact marly Clay.

C: Marly clay, compact marly Clay.

- D: embankment , Clay, compact marly Clay.  
 E: Clay, compact marly Clay, Likings.  
 F: embankment , marly Clay, compact marly Clay.  
 G: Marly clay, compact marly Clay, Sand.  
 H: embankment, marly Clay, compact marly Clay.  
 I: Clay, marly Clay, compact marly Clay, Likings.  
 J: embankment, Clay, marly Clay, compact marly Clay.  
 K: embankment, marly Clay, compact marly Clay, Likings.  
 M: Fill, Clay, compact marly Clay, Alluvia.  
 NR: embankment, Clay, compact marly Clay, Likings, Limestone.  
 O: embankment, Clay, compact, Calcareous marly Clay.  
 P: embankment, Clay, compact marly Clay, Sand, Limestone.  
 Q: Marly clay, compact marly Clay, Sand.

Propriétés	Unit	Min	mean	Max
Depth (m)	m	0,60	6,30	12,00
Natural voluminal weight	T/m <sup>3</sup>	2,01	2,110	2,22
Dry voluminal weight $\gamma_d$	T/m <sup>3</sup>	1,76	2,030	2,30
Liquid limit $L_L$	%	42,90	48,450	54,00
Index of plasticity $I_p$		17,70	26,30	34,90
Degree of saturation $S_r$	%	15,00	57,00	99,00
Free swelling $\sigma_g$	KPa	/	/	/
Carbonates $CaCO_3$	%	16,80	17,90	19,00
Oedometric characteristic	$\sigma_c$	KPa	171.0	257.0
	$C_c$		0,066	0,094
	$C_g$		0,027	0,042
Shear strength CD	C	KPa	25.0	32.0
	$\varphi$	(°)	16,0	17,5

**Table 1.** Characteristics of the layer of clay and marly clay



Propriétés	Unité	Min	Moy	Max	
Depth (m)	m	0,80	10,40	20,00	
Natural voluminal weight	T/m <sup>3</sup>	1,73	1,975	2,220	
Dry voluminal weight $\gamma_d$	T/m <sup>3</sup>	1,53	1,86	2,190	
Liquid limit $L_L$	%	42,90	55,40	67,90	
Index of plasticity $I_p$		17,70	29,95	42,20	
Degree of saturation $S_r$	%	11,00	55,00	99,00	
Free swelling $\sigma_g$	KPa	460,0	570,0	680,0	
Oedometric characteristic	$\sigma_c$	KPa	50,0	290,0	531,0
	$C_c$		0,038	0,105	0,171
	$C_g$		0,021	0,059	0,097
Shear strength CD	C	KPa	10,0	62,5	115,0
	$\phi$	(°)	5,00	15,0	25,00

**Table 2.** *Characteristic of the compact marly layer of clay*

For the management of this ground, the choice of the initial part must take into account a very great quantity of parameters of number of which those which raise of geotechnics are among most important.

A complete geotechnical study ensures a safety, a economic and a facility in execution.

The geotechnical map is a necessary element and an important one for the establishment of the plans of occupation of the ground, but insufficient for drawing up a project of foundation quantitatively.

It would be however excessive and dangerous to conclude that the absence of past or present problems of ground is a guarantee for stability in the future. They will be able to occur according to the evolution of the natural conditions.

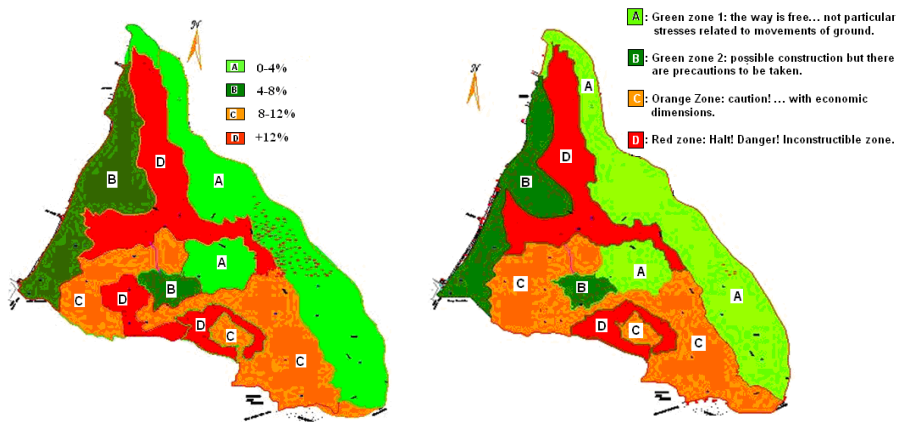
On the level of the specific execution, the specific study remains irreplaceable.

## 5. Elaboration of maps at risks

For the elaboration of the maps at risks (Figure.4), one takes into account the density of the risks and the multirisk character, the specificity of the types of movements which can meet in a more specific way [14] (Houmadi et al. 2008).

It is no way to be delayed on the analytical phase, for that it is necessary:

- A historical investigation into the past movements.
- A research on the ground of the active indices of movement with the support of air topographies.
- From these data, the map at risks is built. It provides the following information:
  - In the form of colors (red, orange and green): A zoning of the zones exposed to the risks of movement of ground. Various colors expressing a graduation of the zones according to their degree of exposure at these risks. It is the interpretative part of the map.
  - The diversity of the studied phenomena, complicates much the definition of the zoning of the multirisk maps when it is necessary to take into account in the same zone of the types of movement of different nature each one having its own scale of graduation in a hierarchisation of the risks.



**Figure 6.** Chart of the slopes of the ZHUN East of Saïda **Figure 7.** The Risks map of the ZHUN East of Saïda

The Chart at risk was carried out starting from the following points:

- The map of the slopes.
- Localization of the various active argillaceous layers.

One divided the map into four zones, in the form of colors (green 1, green 2, orange and red).

Various colors expressing a graduation of the zones according to their degree of exposure to the risks:

- Green zone 1: the way is free... not particular stresses related to movements of ground.
- Green zone 2: possible construction but there are precautions to be taken.
- Orange Zone: caution! ... with economic dimensions.
- Red zone: Halt! Danger! Inconstructible zone.

## 6. Study of the inflating character of clays

Starting from a statistical study on 200 samples, David and Komornik (Quoted by [15] Kabbaj, 1989) deduced a relation which makes it possible to estimate the pressure of swelling.

Adjusted with clays of the area of Tlemcen by Bekkouche & Al 2002, this relation is written:

$$\log p_s = 2,08 W_L + 0,06688 \gamma_d - 2,69 W_n - 1,868 \quad [1]$$

The pressure of swelling  $p_s$  is given in  $\text{kg/cm}^2$ , the liquid limit  $W_L$  and the natural water content  $W_n$  are in decimal digit while the density  $\gamma_d$  is in  $\text{g/cm}^3$ .

Williams and Donaldson (Quoted by Mouroux, 1989) propose a model which gives the amplitude of swelling according to the load which reigns in the ground. This model is written:

$$S_p = \left( \frac{5,3 - 147e}{I_p} - \log p_s \right) (0,525 I_p + 4,1 - 0,85 W_n) \quad [2]$$

Also, for a null amplitude ( $S_p=0$ ), the free pressure of swelling will be given by:

$$\log p_s = (5,3 - 147e) / I_p \quad [3]$$

In the two preceding relations,  $E$  represents the base of the Napierian logarithm ( $e=2,718$ ),  $I_p$  the index of plasticity and  $W_n$  the natural water content are in % whereas the pressure of swelling  $p_s$  is given in 0,1 MPa.

While being based on the results of 270 tests of swelling carried out on various grounds, Vijayvergiya and Ghazzaly propose two models which make it possible to

obtain the pressure of swelling. These models adjusted with clays of Tlemcen are written respectively:

$$\log p_s = \frac{1}{12}(0,4W_L - W_n - 0,4) \quad [4]$$

$$\log p_s = \frac{1}{19,5}(\gamma_d + 0,65W_L - 139,5) \quad [5]$$

In these models, the pressure of swelling PS is given in tsf, the density dries  $\gamma_d$  in pcf, and the limit liquid WL and the natural water content Wn is in decimal.

For the amplitude of swelling, the models generally give free swelling. The model suggested by O'Neil and Ghazzaly is written:

$$S_p = 2,77 + 0,131W_L - 0,27W_n \quad [6]$$

While the model suggested by Jonhson and Snethen, is written:

$$\log S_p = 0,036W_L - 0,0833W_n + 0,458 \quad [7]$$

In the two preceding relations, Sp is free swelling in %; WL and Wn are expressed in decimal.

Always on the basis of result of the 270 tests of swelling quoted before, Vijayvergiya and Ghazzaly propose the following correlations [3]:

$$\log S_p = \frac{1}{12}(0,096W_L - 0,12W_n + 2,10) \quad [8]$$

$$\log S_p = \frac{1}{19,5}(0,877\gamma_d + 0,117W_L - 0,253) \quad [9]$$

Where  $\gamma_d$  is in pcf, WL and Wn are in decimal and Sp in %.

The free swelling, obtained starting from the models above, can be reduced if the ground would be subjected to a confining pressure  $\sigma_v$  using the following formula suggested by Gogoll:

$$S'_p = S_p(1 - 0,0735\sqrt{\sigma_v}) \quad [10]$$

Where  $\sigma_v$  is the stress of containment in KPa.

Taking into account the variation noted between the values of the parameters swelling directly measured and those provided by the models above, a first idea

consisted of the adaptation of the models proposed on the ground studied by an adjustment (Bekkouche and AI, 2002).

The examination of the results of this adjustment emphasizes the following remarks: (Bekkouche et AI, 2002).

- Models of Seed and AI do not hold account the natural water content which in our opinion remains determining a parameter in the process of swelling. These models use only interdependent parameters (content of clay, the activity and the index of plasticity),

- The model of Nayak and Christensen and the model of Vijayvergiya and Ghazzaly cannot be used for high values of the content of clay, natural water content and liquid limit. The first model is based on interdependent parameters, as for the second, it does not take account of the natural water content.

- The model of Johnson predicted overall of the percentages of swelling within limits usually observed in practice.

While being based on these results and conclusions quoted above, a statistical study on the available data of clays of the zone of study was carried out to seek specific models to these grounds. One gives below the models considered to be satisfactory.

<b>Mathematical expression (statistical model)</b>	
$\text{Log } \sigma_g = 0,01 \cdot I_p + 1,26 \cdot \gamma_d - 0,008 \cdot W_n - 0,1 \cdot M - 2,179$ avec (M=3)	
<b>Statistical characteristic of the pressure of swelling <math>\sigma_g</math> in (bars=10<sup>2</sup>KPa)</b>	
Average	1,663
Error-type	0,172
Standard deviation	0,8932
Minimum	0,344
Maximum	3,581

**Table 3.** *Characteristic of the compact marly layer of clay (swelling pressure)*

<b>Mathematical expression (statistical model)</b>	
$\varepsilon_g = 34,388 - 17,82 \cdot \gamma_d + 0,07687 \cdot M + 0,07687 \cdot Z$ (avec M=3)	
<b>Statistical characteristic of the amplitude of swelling <math>\varepsilon_g</math> (%)</b>	
Average	2,547
Error-type	0,361
Standard deviation	1,655
Minimum	0,349
Maximum	7,562

**Table 4.** *Characteristic of the compact marly layer of clay (swelling amplitude)*

## 7. Conclusions

This work on the geotechnical cartography and of the risks of movement of ground shows the interest caused by these methods, which sounds of the multiple forms, opened the way to a very sensitive improvement of the prevention of the risks.

It is advisable, in addition, to stress that parallel to the actions, from many pieces of research came to enrich and prolong the purely cartographic results: monitoring of the movements, calculation of stability, seeks on the techniques of protection... etc

Also knowing that the dimensional checks of the parameters of swelling are long and expensive, it would be very interesting to be able to quickly obtain a first estimate of these parameters. The use of the mathematical models offers this possibility. Only, and as it was specified in this work, the models of the literature are not usable for any family of clay. The solution would be to seek specific models to each family of clay, this of course by means of having sufficient information.

## 8. Bibliographie

- Bekkouche A., Djedid A., Aissa Mamoune S.M, (200) Prévission du gonflement des sols argileux, Conférence Internationale de GEOENGINEERING, U.S.T.H.B, ALGER.
- Chen F. H. (1988) *Foundations on expansive soils*, Elsevier, U.S.A.
- Djedid A., Bekkouche A., S.M. Aissa Mamoune (2001) Identification et prévission du gonflement de quelques sols de la région de Tlemcen (Algérie), *Bulletin des Laboratoires des Ponts et Chaussées*, N°233, pp 67-75.
- Donsimoni M., Hatton C., Giraud F. (juillet 2004), Cartographie de l'aléa retrait-gonflement des sols argileux dans le département du Val-d'Oise. Rapport final, BRGM/RP-52598-FR, France.
- Donsimoni M., Kerneis M., Giraud F (Août 2006) Cartographie de l'aléa retrait gonflement des sols argileux dans le département de Seine-et-Marne. Rapport final BRGM/RP-53212-FR, France.
- Dam J. P. ; Nuyens J. ; Rosin U ; Thonard R. : "Carte géotechnique 31.3.1. BRUXELLES", Edition : Institut géotechnique de l'état. BELGIQUE (1984).
- DJIDI K. (1997), "apport des systèmes d'information géographique SIG à la détermination des zones à risque de pollution des ressources en eau ; application à la nappe de Saida", Mémoire de magistère en technique spatiales, CNTS, Centre National des techniques spatiales, Arzew, Oran. (1997).
- Fares A., Rollet M., Broquet P. (1994) : "Méthodologie de la cartographie des risques naturels liés aux mouvements de terrain, Région de Taounate – Rif, Nord du Maroc", *Revue Française de Géotechnique n° 69*, France.

- Houmadi Y., Aissa Mamoune S.M. (2008) : "Cartographie des risques géotechniques "Cas de Saïda" (ZHUN EST – HAI ESSALAM), Conférences sur les risque en génie civil CRGC'01, 08 Avril 2008, Centre universitaire Saida.
- LCPC, "Risques naturelles", *Bulletin de liaison des laboratoires des ponts et chaussées* : N° 150 – 151, (1987). Paris.
- LNHC Saida (2002) ; "Rapport géotechnique ; ZHUN EST Saida" Laboratoire National de l'habitat et de la construction, Saida.
- Kabbaj, M. M. (1989) "Sols gonflants – mesures des propriétés au laboratoire," Symposium International de Mécanique des Sols, Tiaret, Algérie.
- Pauly j.c., payany m. (2002), "Méthodologie et mise en œuvre pour la cartographie de l'aléa lié aux instabilités rocheuses sur un bassin géographique. Cas des gorges du Tarn et de la Jonte (Lozère)" *Bulletin des laboratoires des ponts et Chaussées*, n° 236, France.