

Université Abou Bekr Belkaid
Tlemcen Algérie



جامعة أبي بكر بلقايد

تلمسان الجزائر

UNIVERSITE ABOU BAKR BELKAID-TLEMCCEN

FACULTE DE MEDCINE

CENTRE HOSPITALO UNIVERSITAIRE TEDJINI DAMERDJI

*Statistique du Service de Pédiatrie CHU
Tlemcen Durant l'Année 2009*

Présenté par:

M^le DJELLOULI Zadjia

Encadré par:

Pr. BENDEDOUCHE

Année Universitaire: 2009-2010

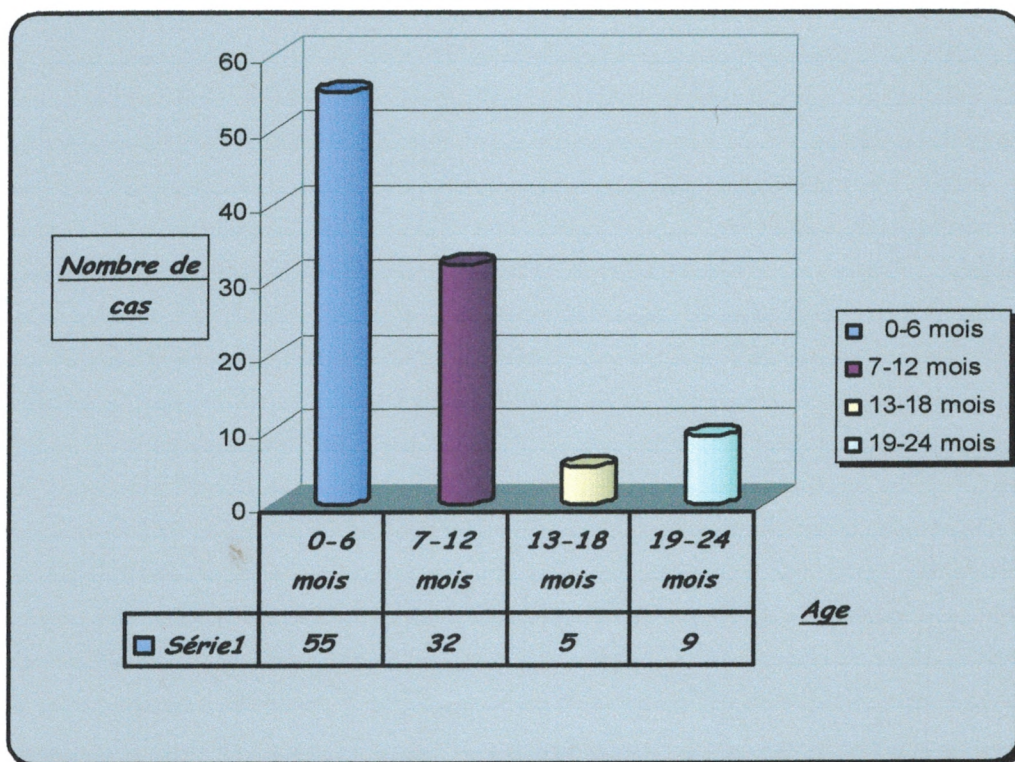
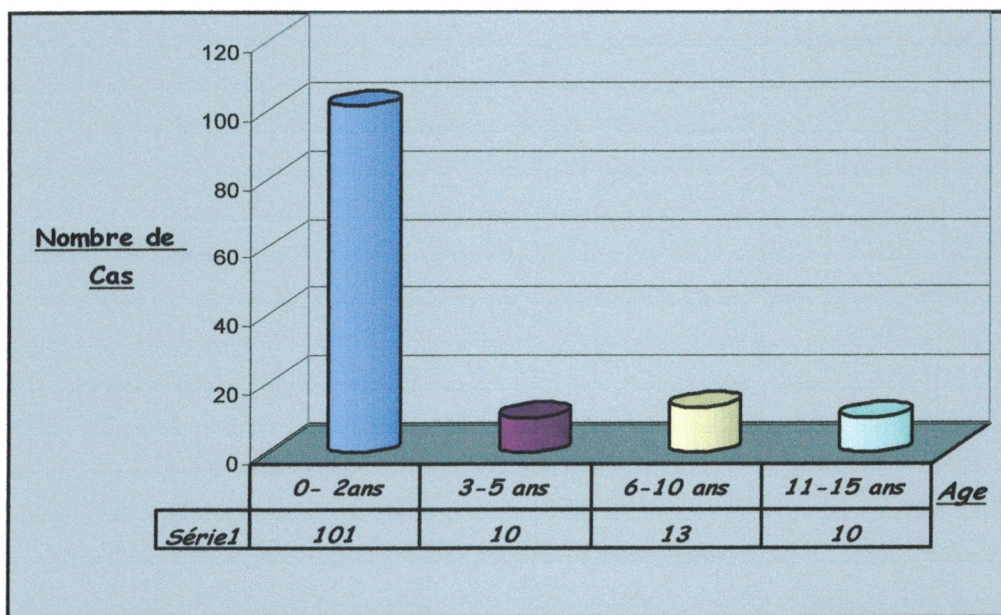
PLAN DE TRAVAIL

1- Pneumopathies.....	2
2- Diabète.....	4
3- Méningites.	5
4- Hémopathies.	7
4-1. β Thalassémies	
4-2. Purpura.	
4-3. Leucémies.	
4-4. anémies	
4-5. Aplasies médullaires	
5- Cardiopathies.	12
6- Tuberculose.	13
7- Syndrome néphrotique.	15
8- Infections urinaire (haute et basse)	16
9. Pyélonéphrite.....	17

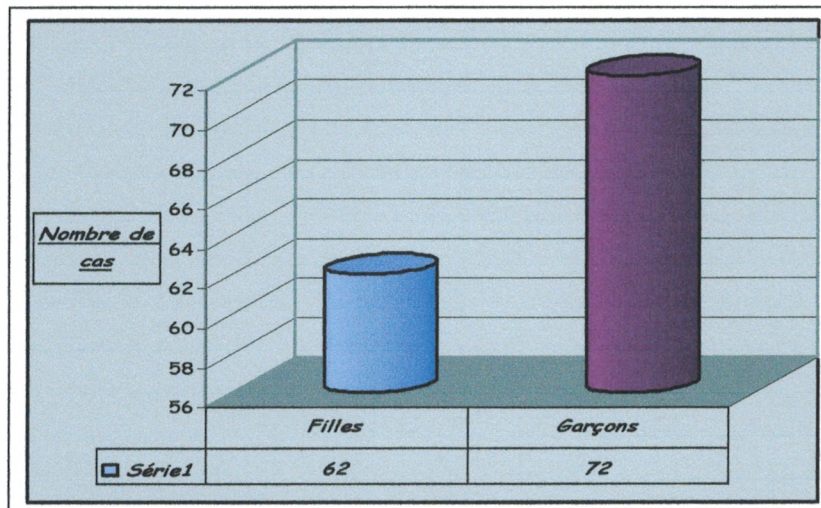
1-Pneumopathies

Total : 134 cas hospitalisé durant l'année 2009

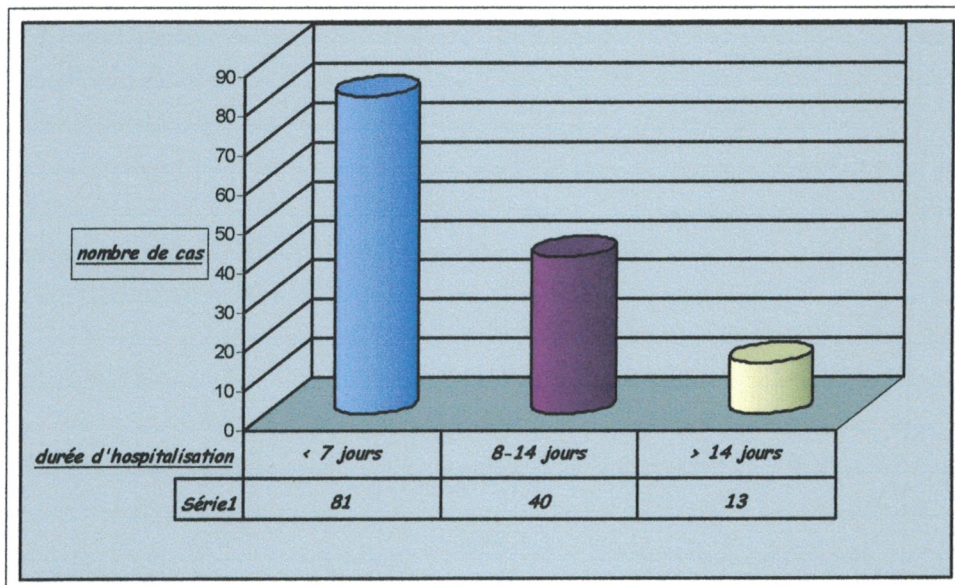
Selon l'âge :



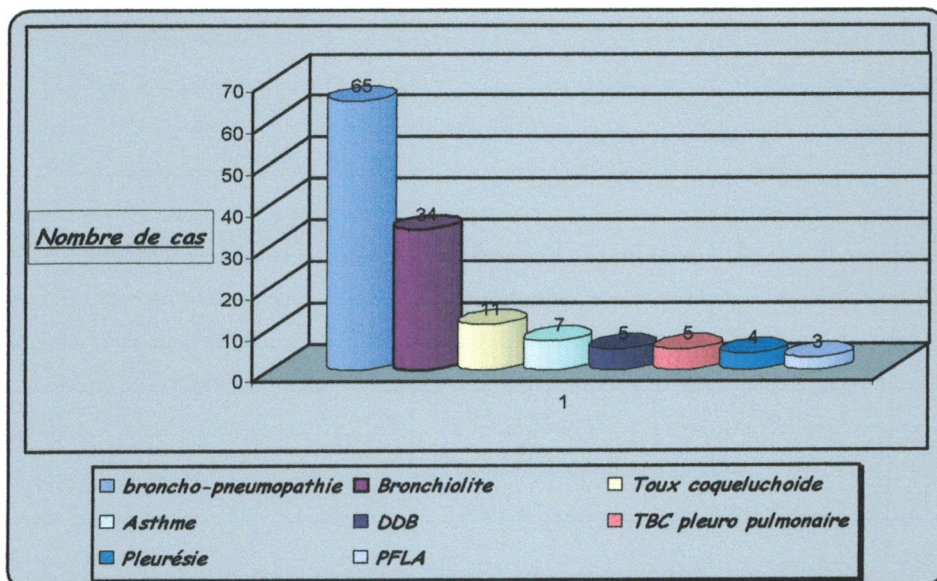
Selon le sexe:



Selon la durée d'hospitalisation:



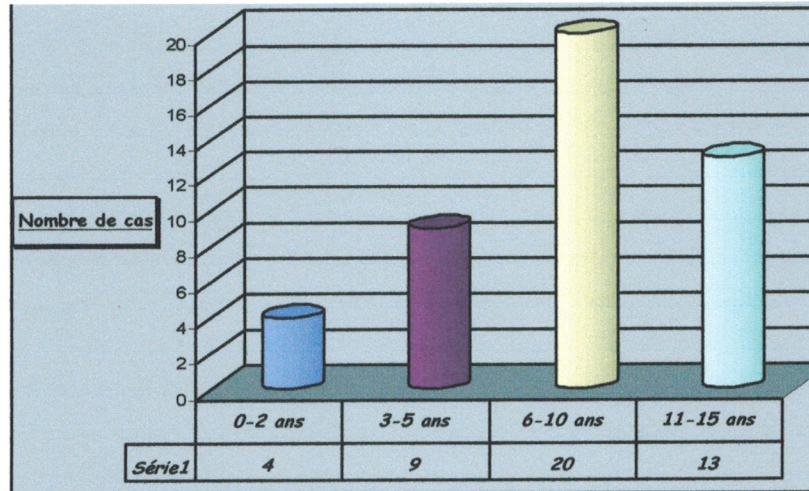
Selon le type de pneumopathie:



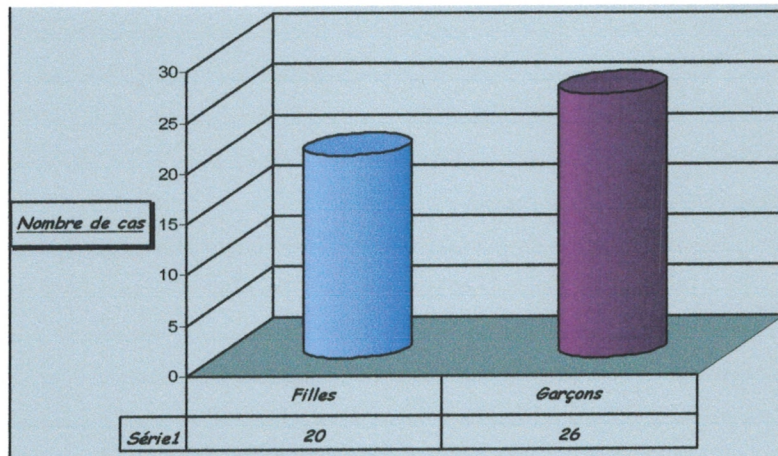
2-Diabète

Total : 46 cas hospitalisés

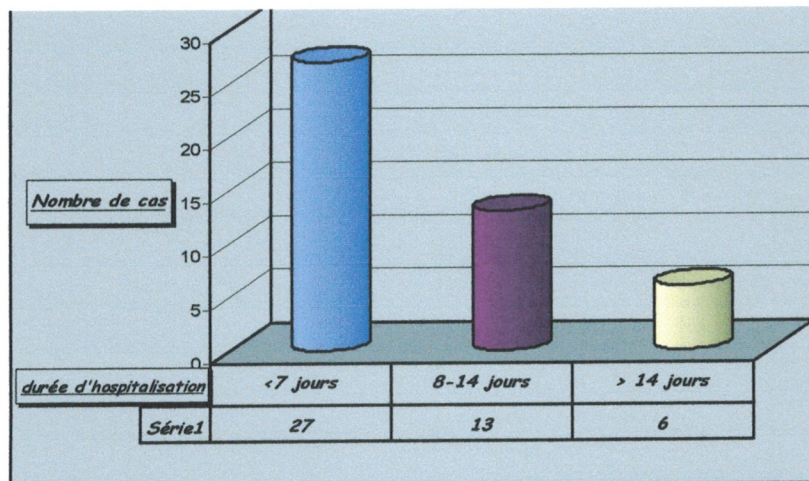
Selon l'âge :



Selon le sexe:



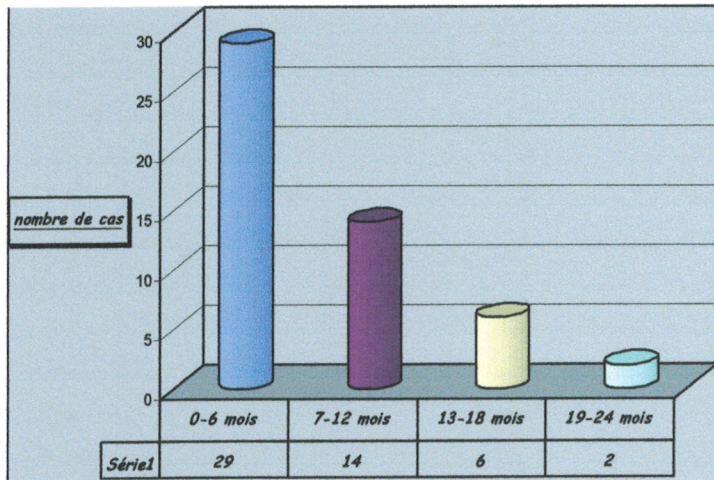
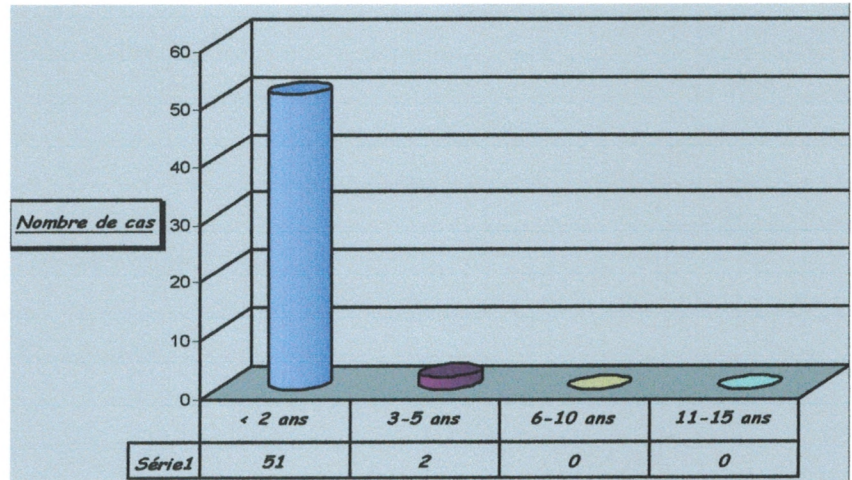
Selon la durée d'hospitalisation:



3-Méningite.

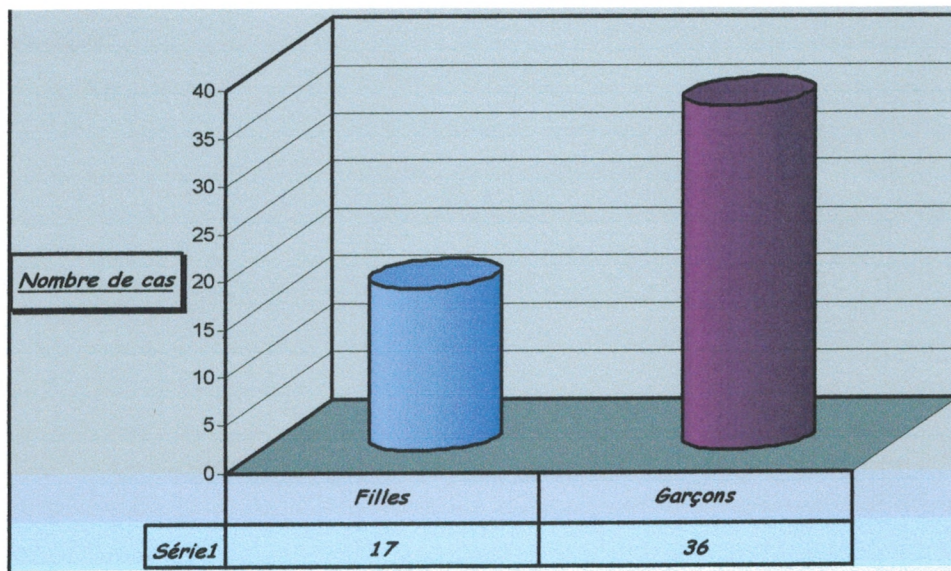
Total : 53 cas hospitalisés

Selon l'âge

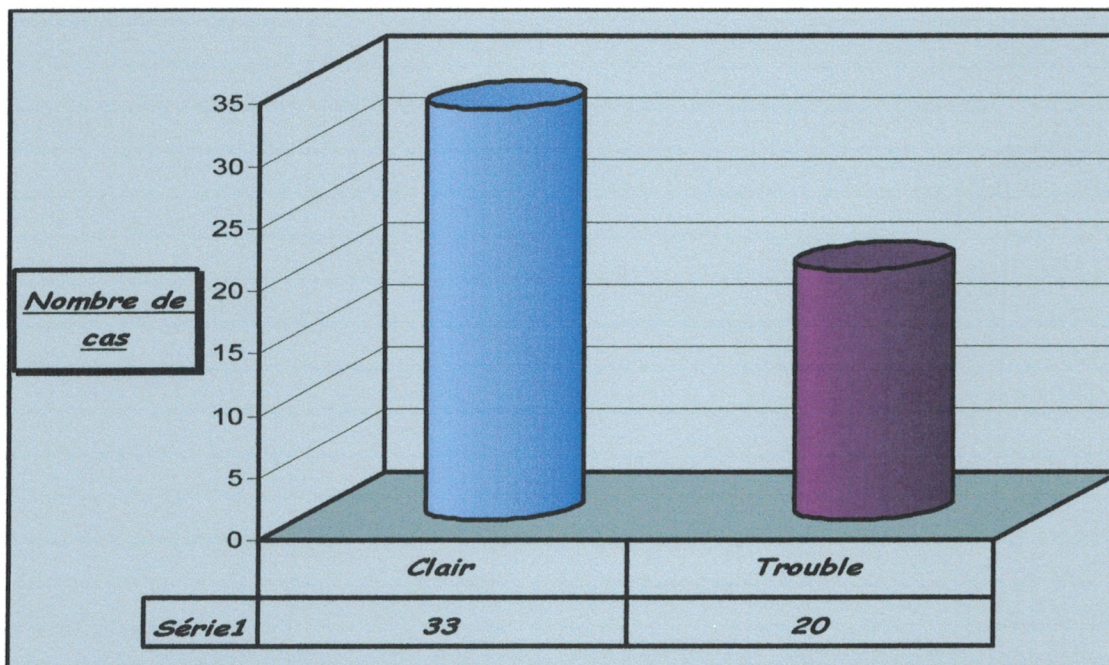


Selon l'âge

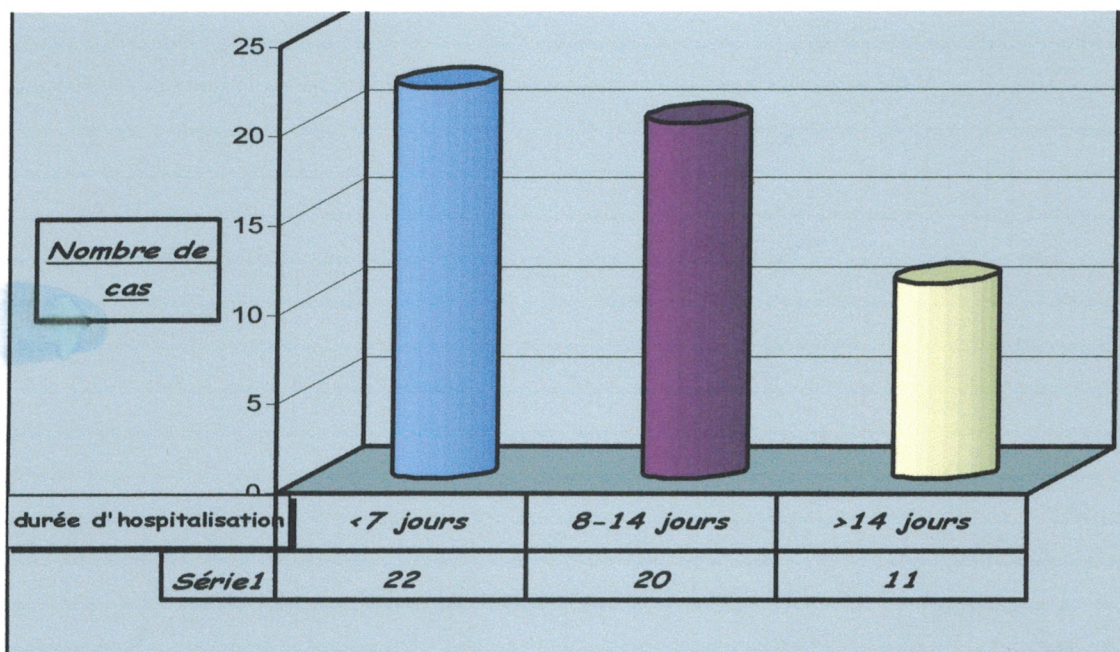
Selon le sexe:



Selon l'aspect macroscopique du liquide de ponction lombaire:



Selon la durée d'hospitalisation:

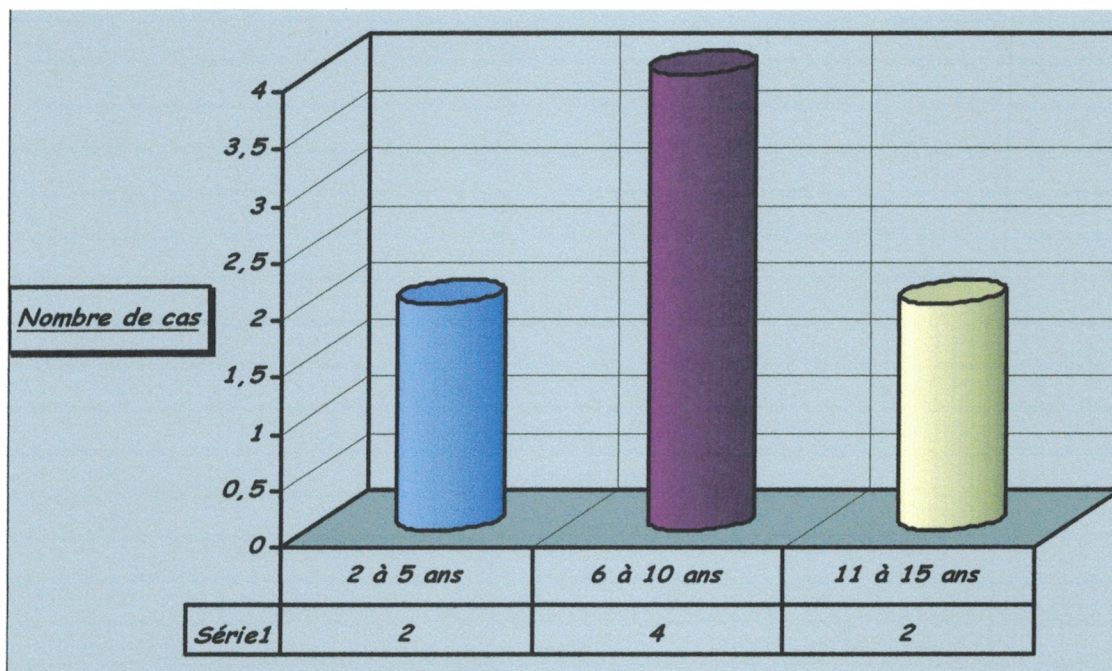


4-Hémopathies

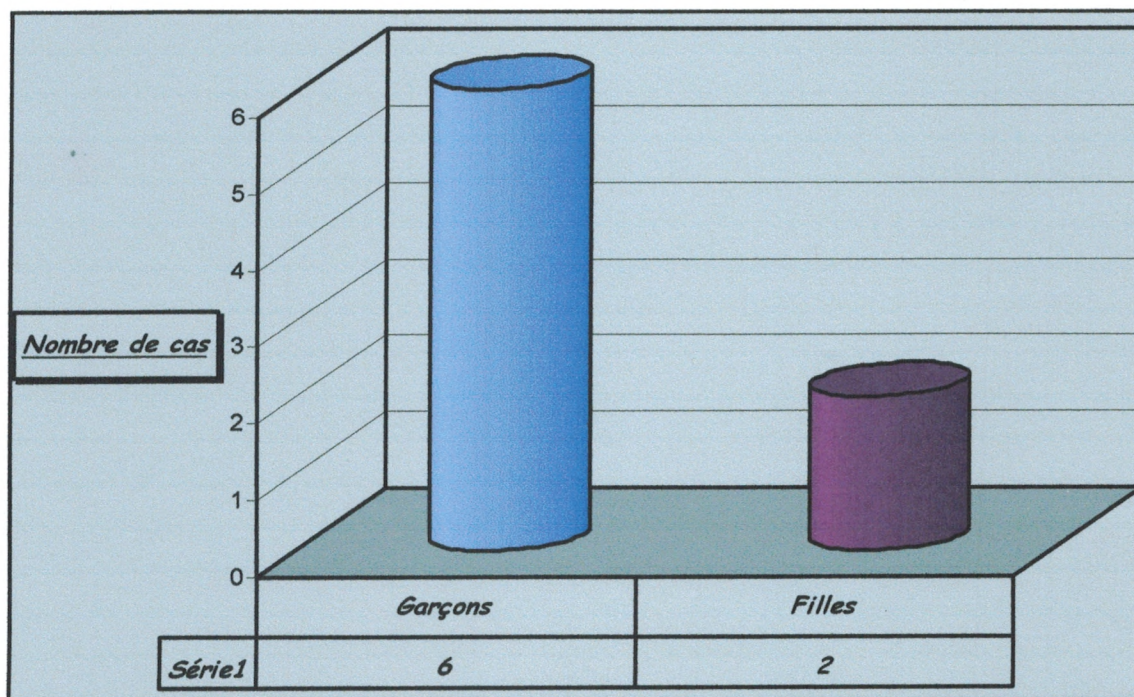
4-1. β Thalassémies

**Total : 8 cas hospitalisés.
4 ré hospitalisations**

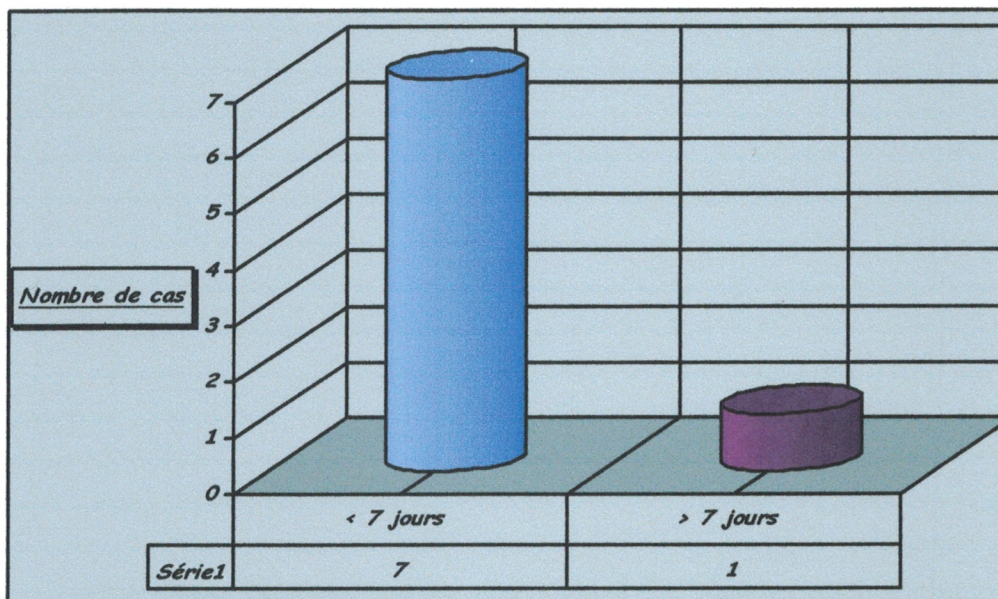
Selon l'âge



Selon le sexe:



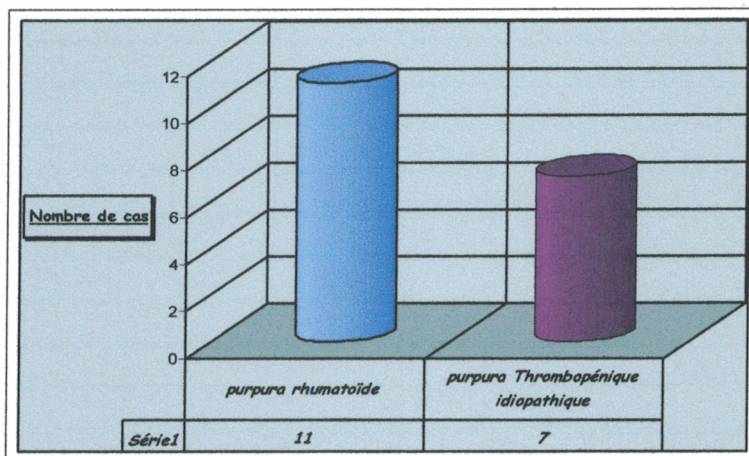
Selon la durée d'hospitalisation:



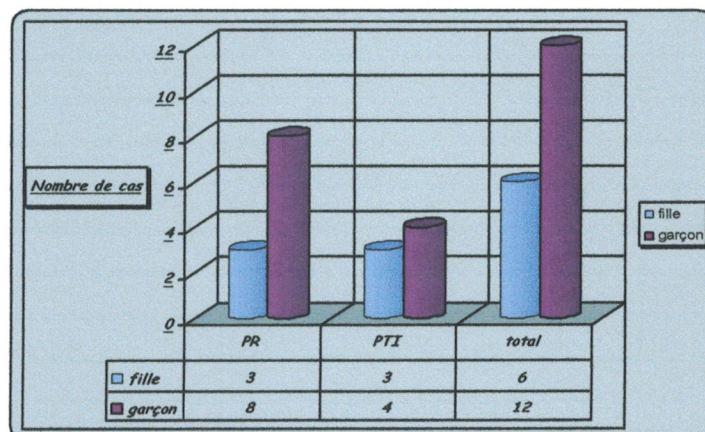
4-2. Purpura

**Total : 18 cas hospitalisés.
6 ré hospitalisations**

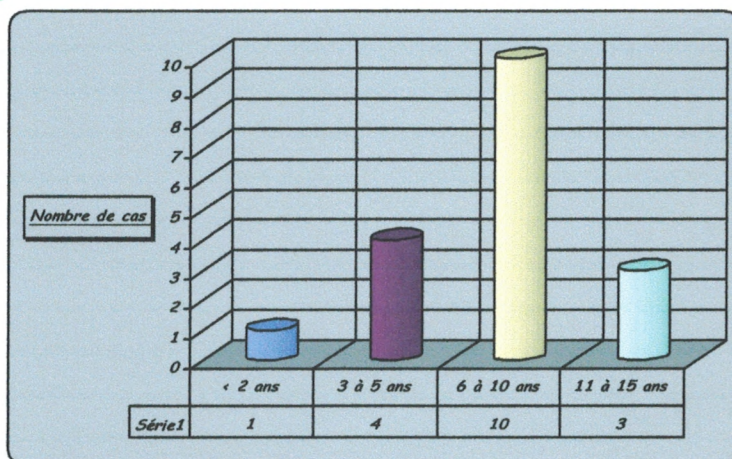
Selon le type :



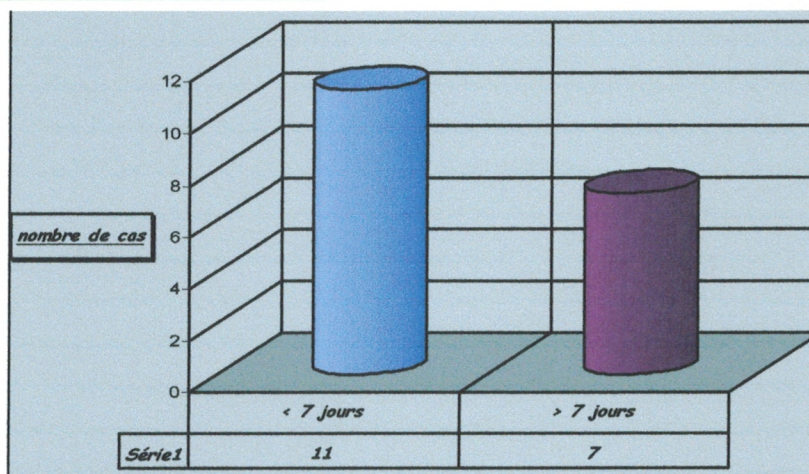
Selon le sexe:



Selon l'âge



Selon la durée d'hospitalisation:

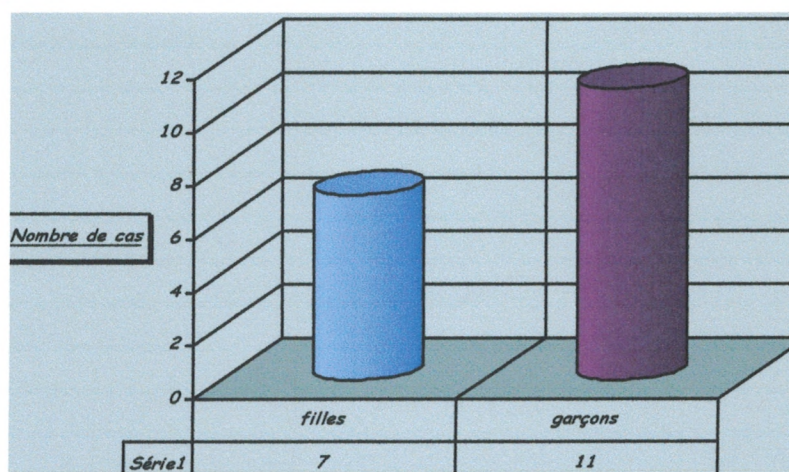


4-3. Leucémies :

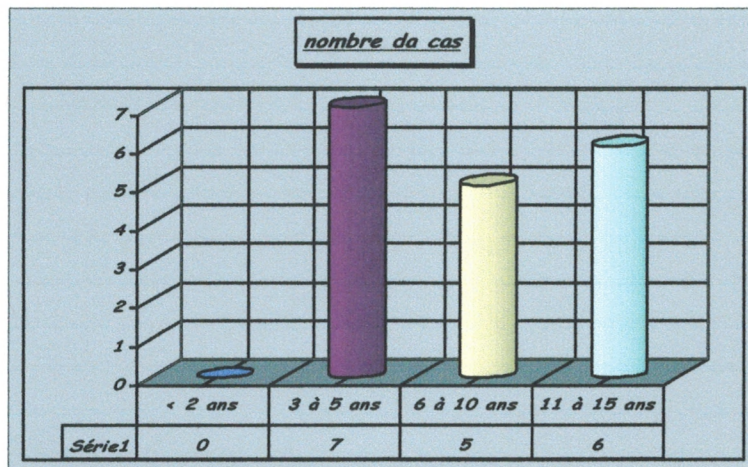
Total : 18 cas hospitalisés, à savoir:

- 15 cas LAL (leucémie aigue lymphoïde)
- 3 CAS LMA (leucémie aigue myéloïde)

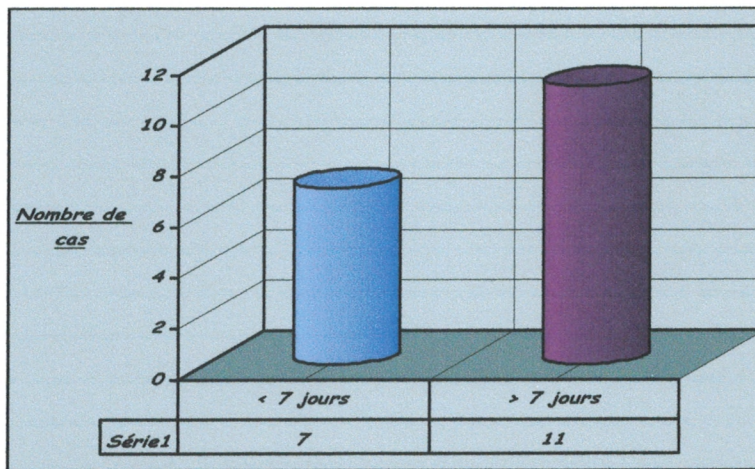
Selon le sexe:



Selon l'âge



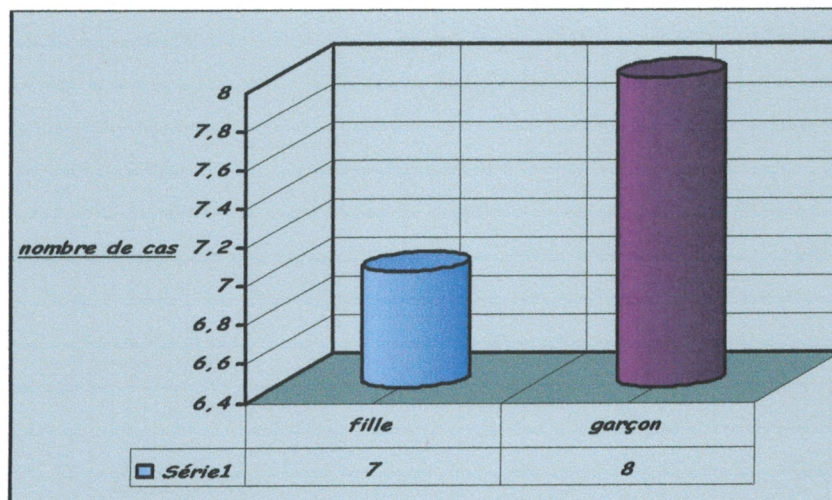
Selon la durée d'hospitalisation:



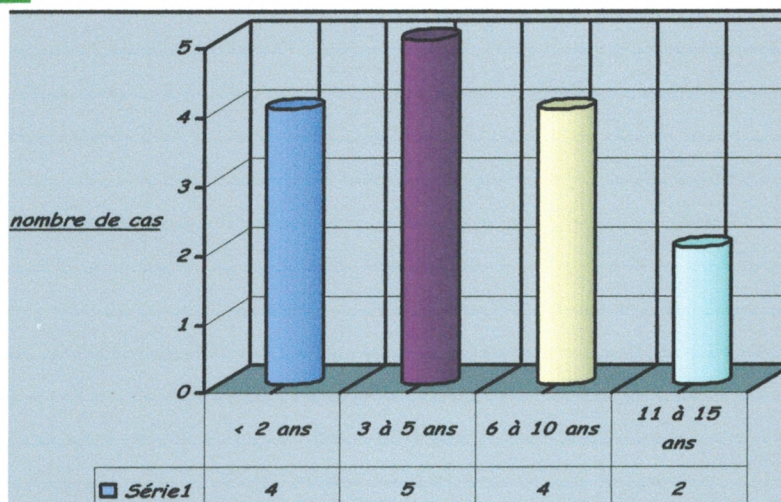
4-4. Anémie :

Total : 15 cas hospitalisés

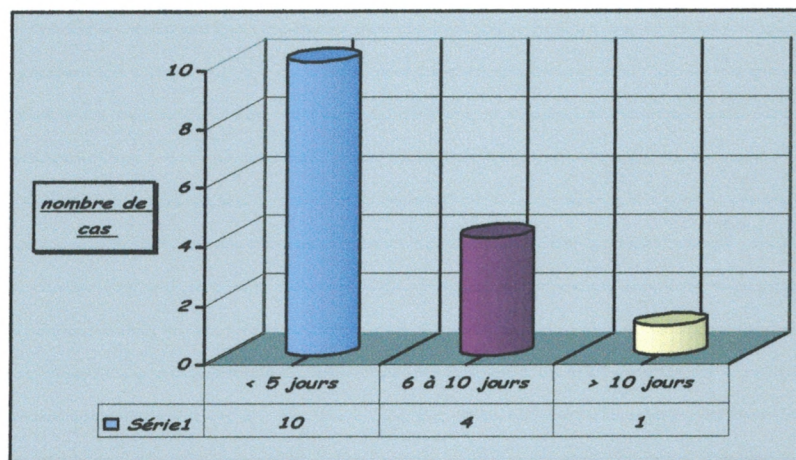
Selon le sexe:



Selon l'âge



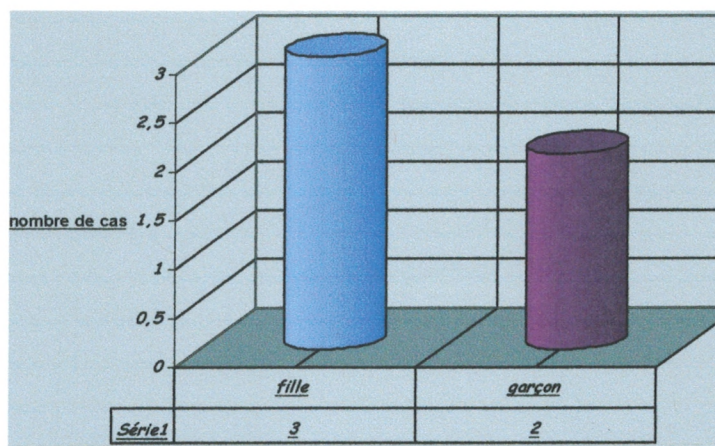
Selon la durée d'hospitalisation:



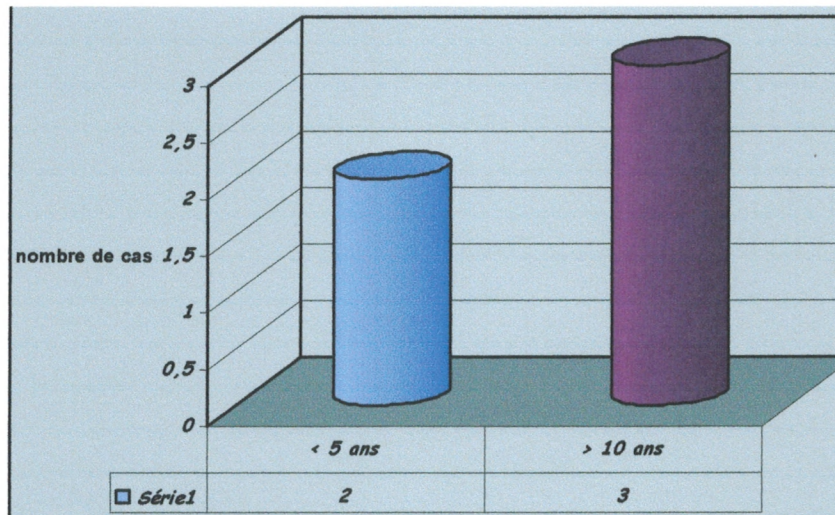
4-5. Aplasies médullaires :

Total : 5 cas hospitalisés

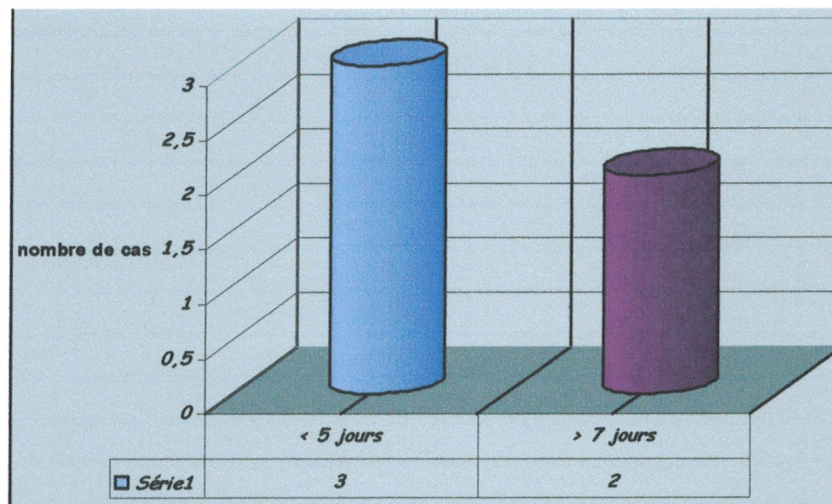
Selon le sexe:



Selon l'âge



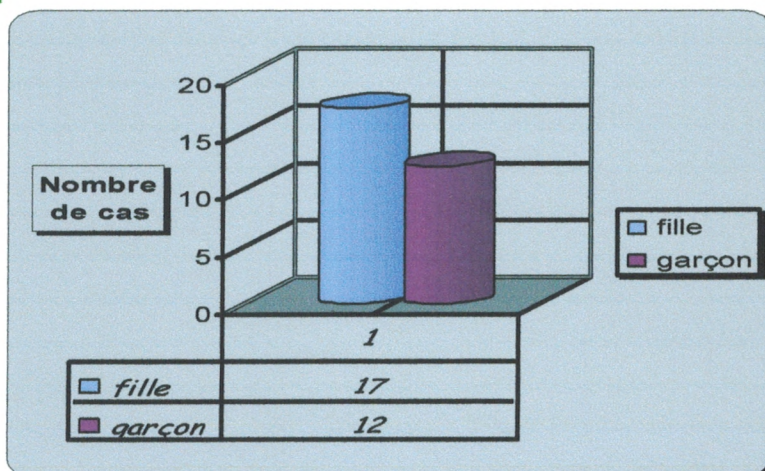
Selon la durée d'hospitalisation:



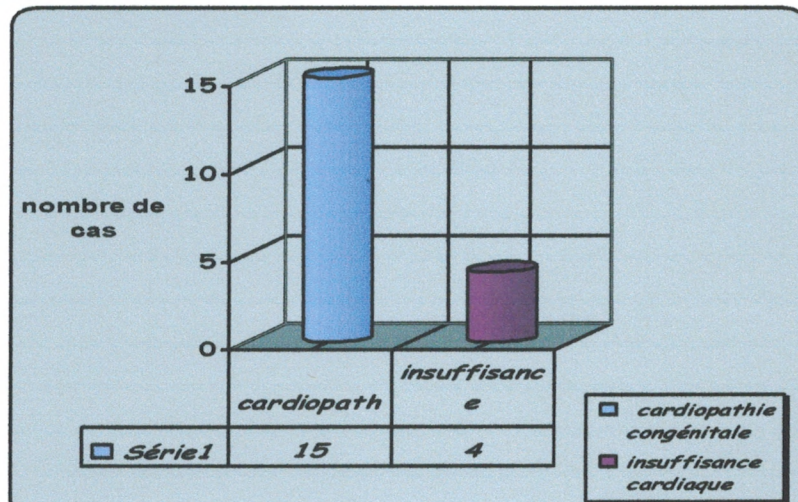
5. Cardiopathies

Total : 29 cas hospitalisés

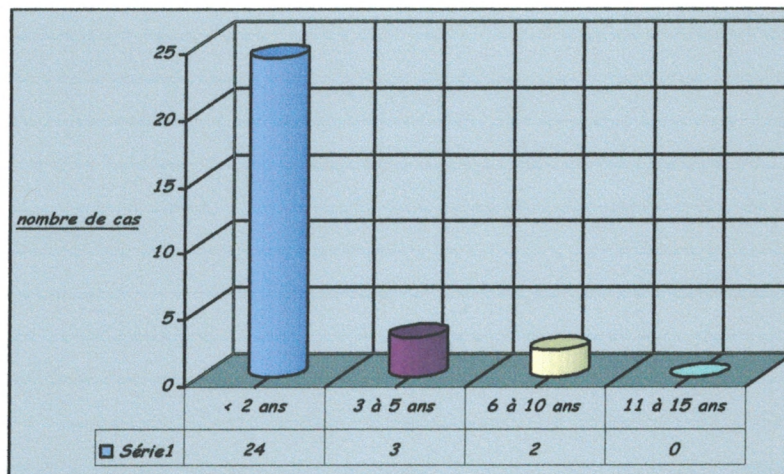
Selon le sexe:



Selon le type de cardiopathie :



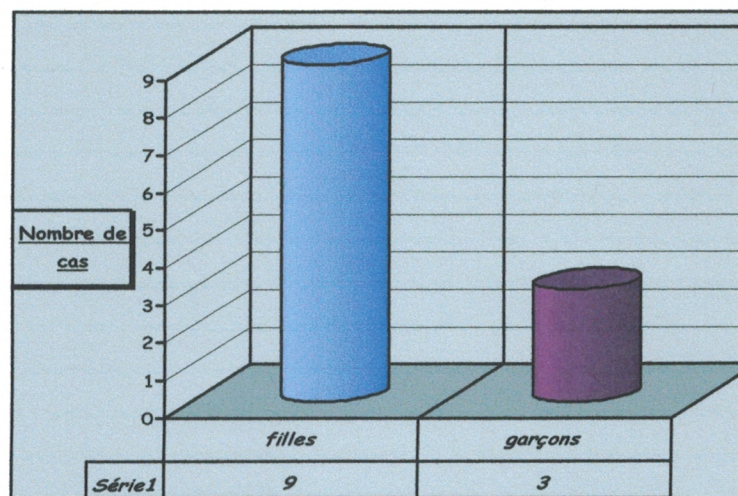
Selon l'âge



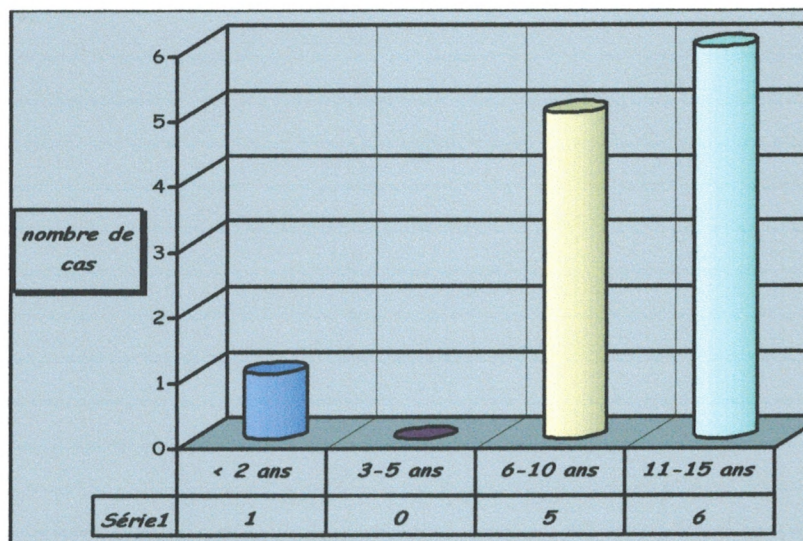
6. Tuberculose.

Total : 12 cas hospitalisés

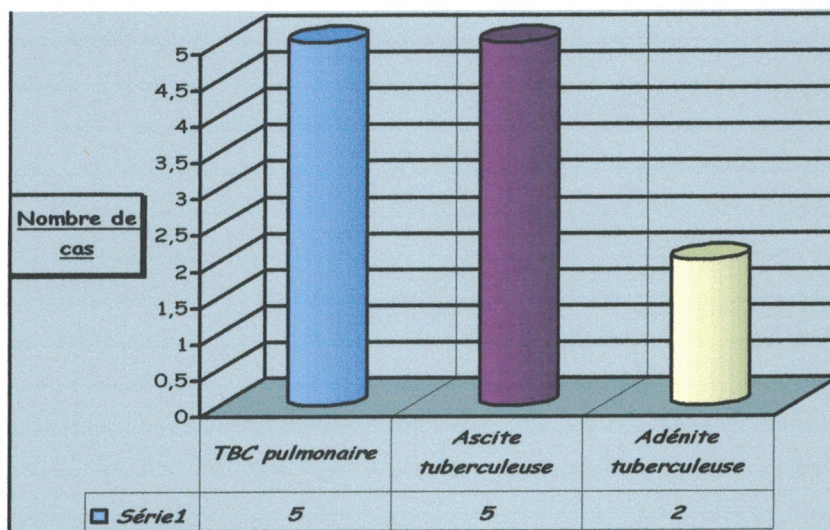
Selon le sexe:



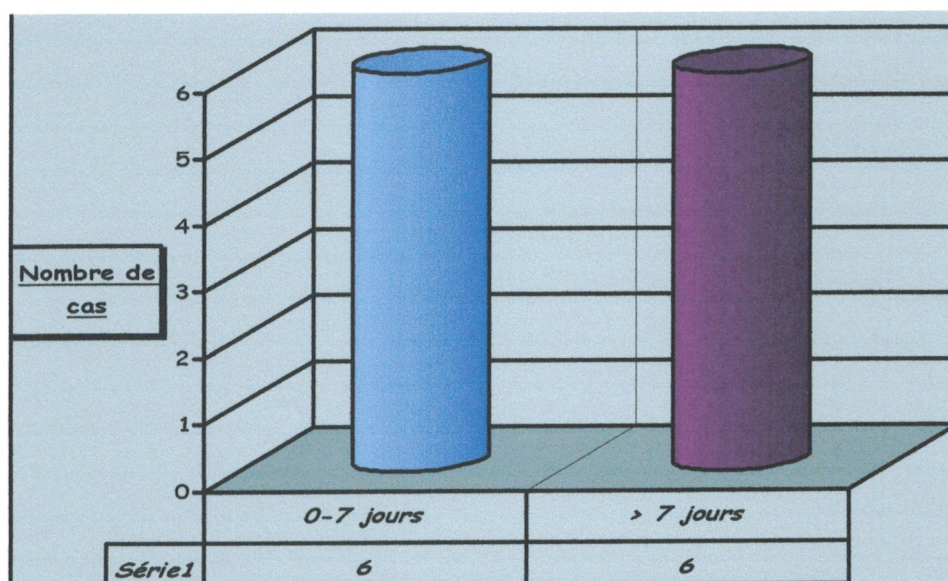
Selon l'âge



Selon la localisation



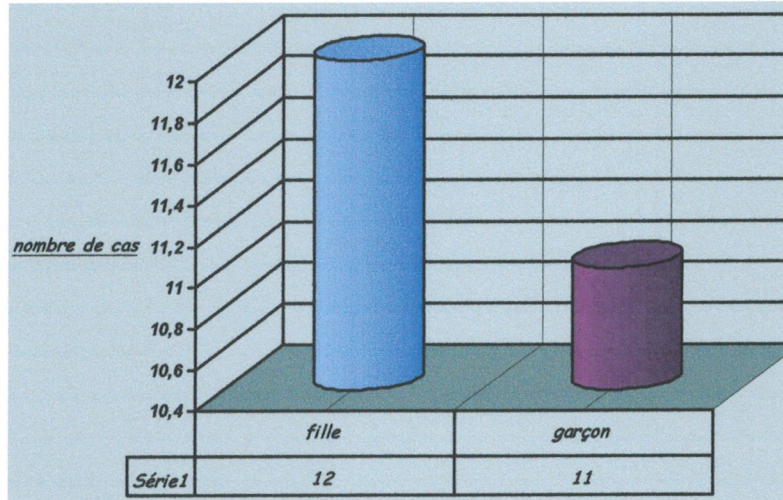
Selon la durée d'hospitalisation:



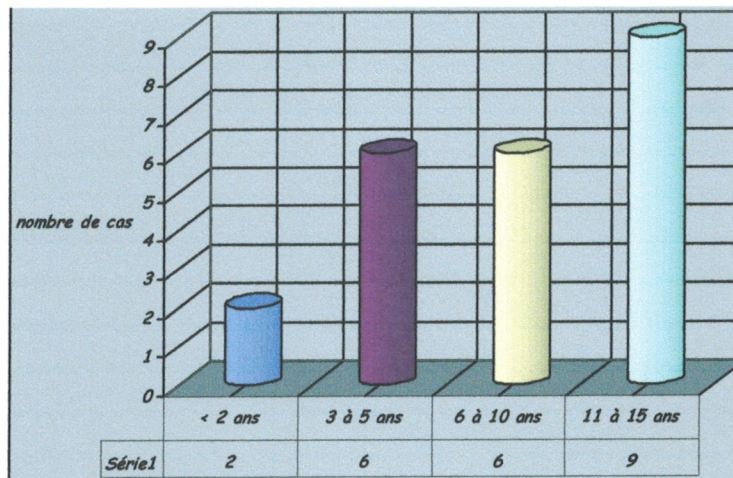
7. Syndrome néphrotique

**Total : 23 cas hospitalisés.
4 ré hospitalisation.**

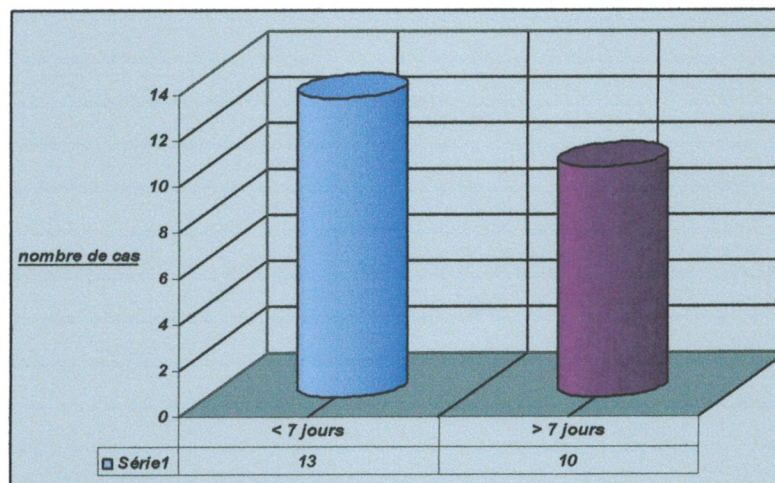
Selon le sexe:



Selon l'âge :



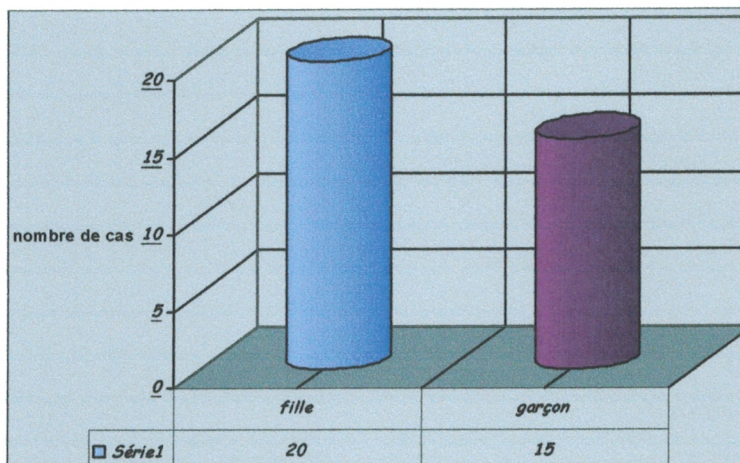
Selon la durée d'hospitalisation:



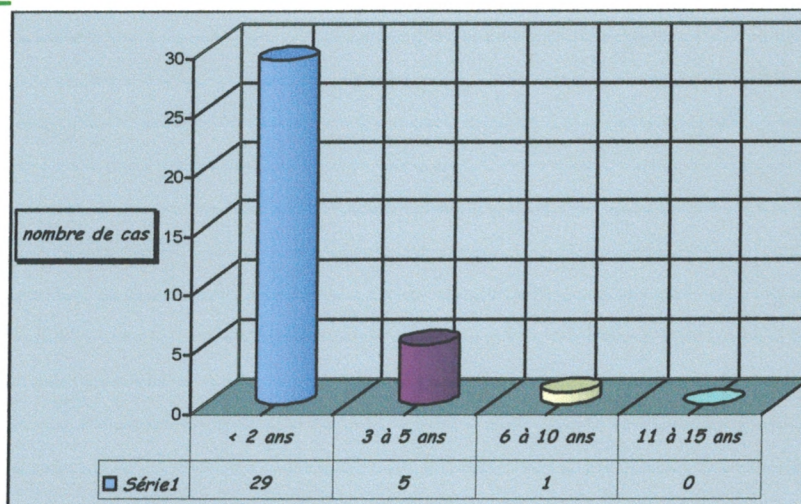
8. Infections urinaire basses.

Total : 35 cas hospitalisés.

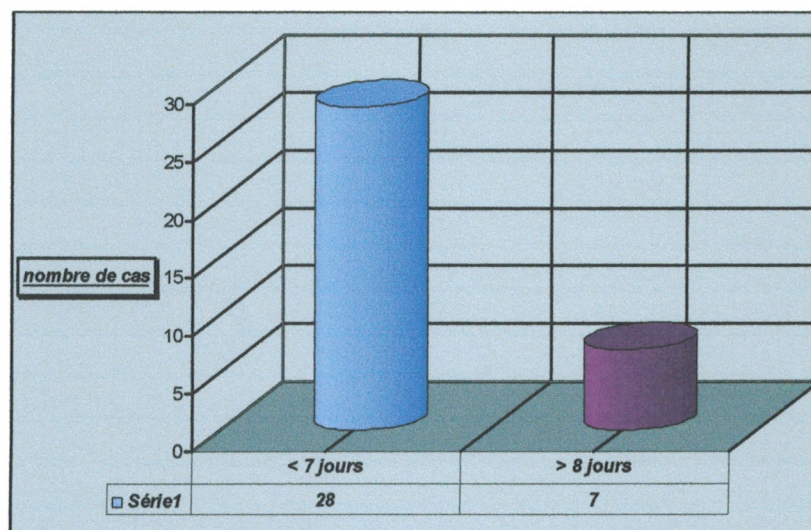
Selon le sexe:



Selon l'âge :



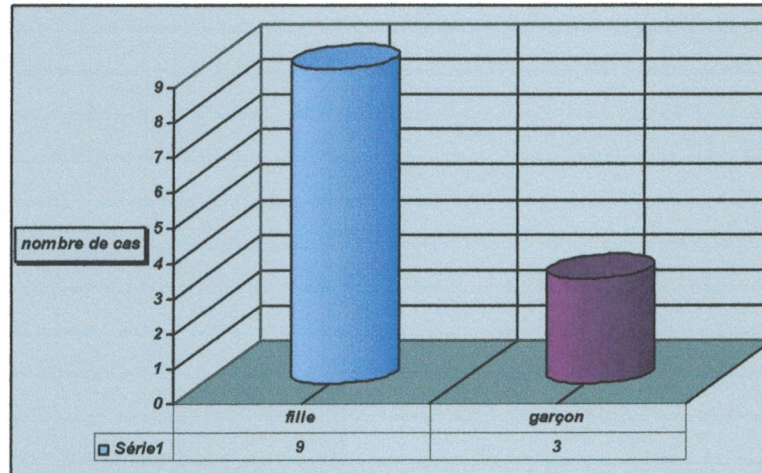
Selon la durée d'hospitalisation:



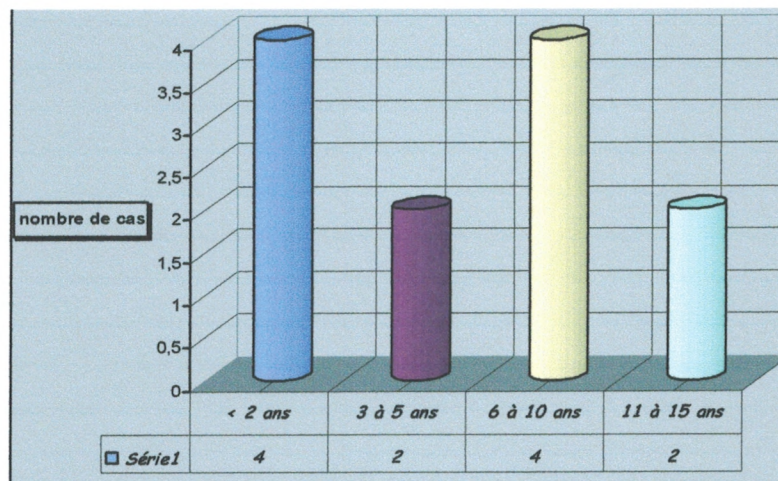
9. Pyélonéphrite

Total : 12 cas hospitalisés.

Selon le sexe:



Selon l'âge :



Selon la durée d'hospitalisation:

