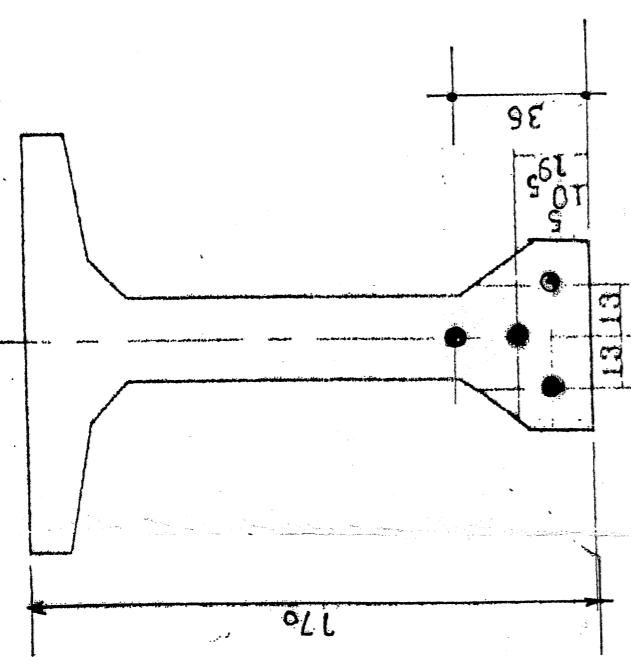
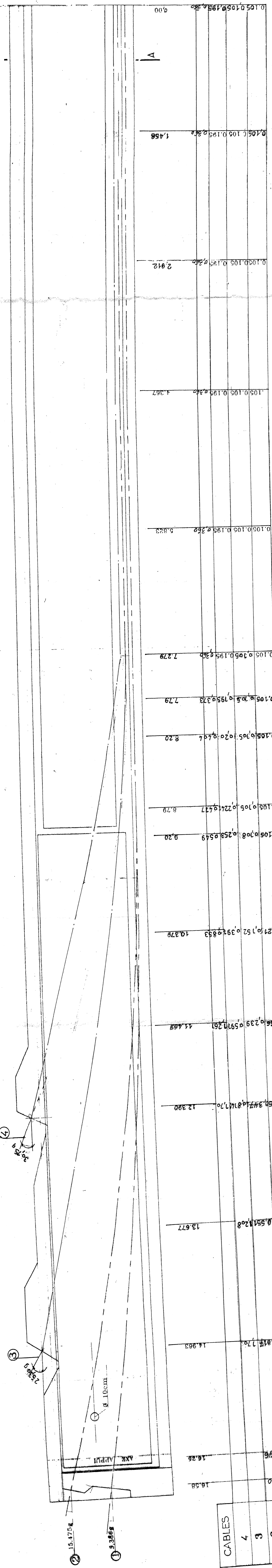


COUPE A, A ECH 1/20

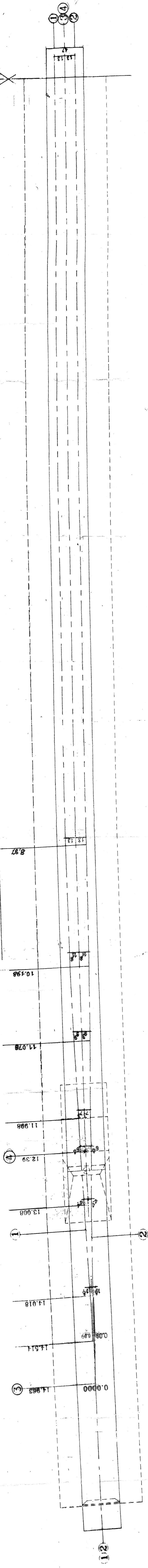
Absc. 0.000



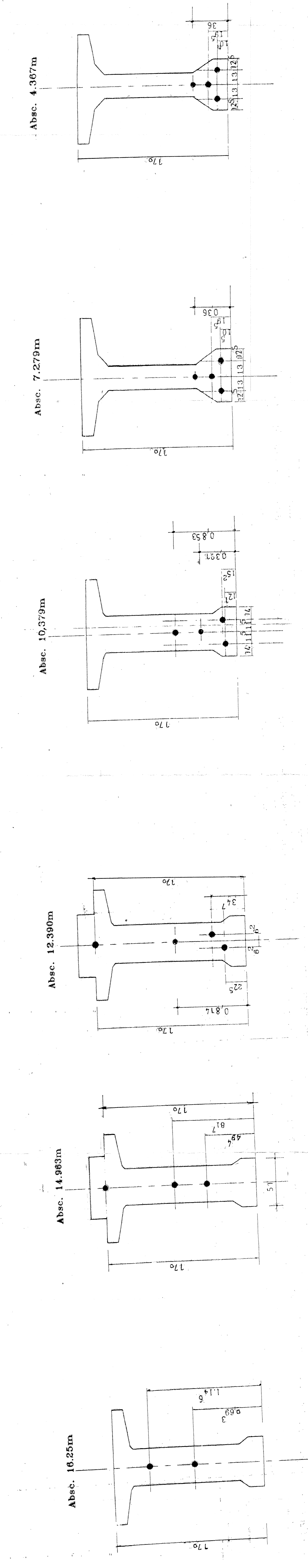
1/2 COUPE LONGITUDINALE ECH: 1/20



DEVIATION EN PLAN ECH: 1/20



COUPES TRANSVERSALES ECH: 1/20



PROGRAMME DE MISE TENSION

ALGA	Pression bobine (bars)	Pression bobine (kg/cm²)	Effort (kg)	Pression bobine (bars)	Pression bobine (kg/cm²)	Effort (kg)	Pression bobine (bars)	Pression bobine (kg/cm²)	Effort (kg)
1	200	30.24	121.3	304.51	45.66	173.5	304.51	45.66	173.5
2	300	45.36	211.5	453.76	67.04	263.5	453.76	67.04	263.5
3	400	60.48	281.7	607.52	88.38	343.5	607.52	88.38	343.5
4	500	75.60	351.9	761.28	109.72	423.5	761.28	109.72	423.5

LES PRESSIONS INDIQUEES CORRESPONDENT A 02 TYPES DE VERRINS (ALGA OU DSI) SELON DISPONIBILITE. CEPENDANT UN SEUL TYPE DE VERRIN SERA ADOPTIE POUR LE VADUC. ET POUR L'ENSEMBLE DES ANCRAGES - VERRIN DSI.

NOTA: (1) Section du verin: 300 cm² ALGA. (2) Section du verin: 500 cm² Systeme DSI.